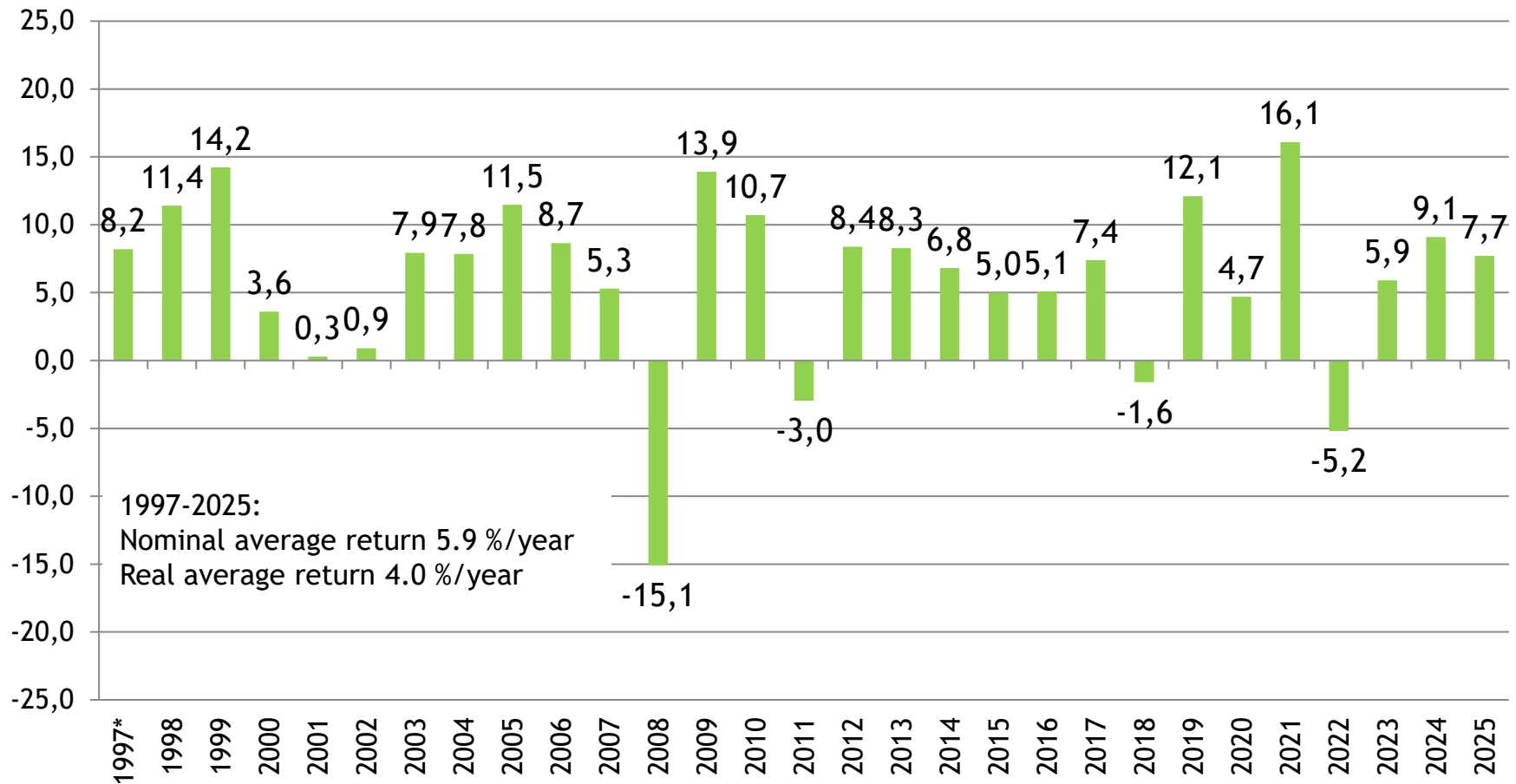


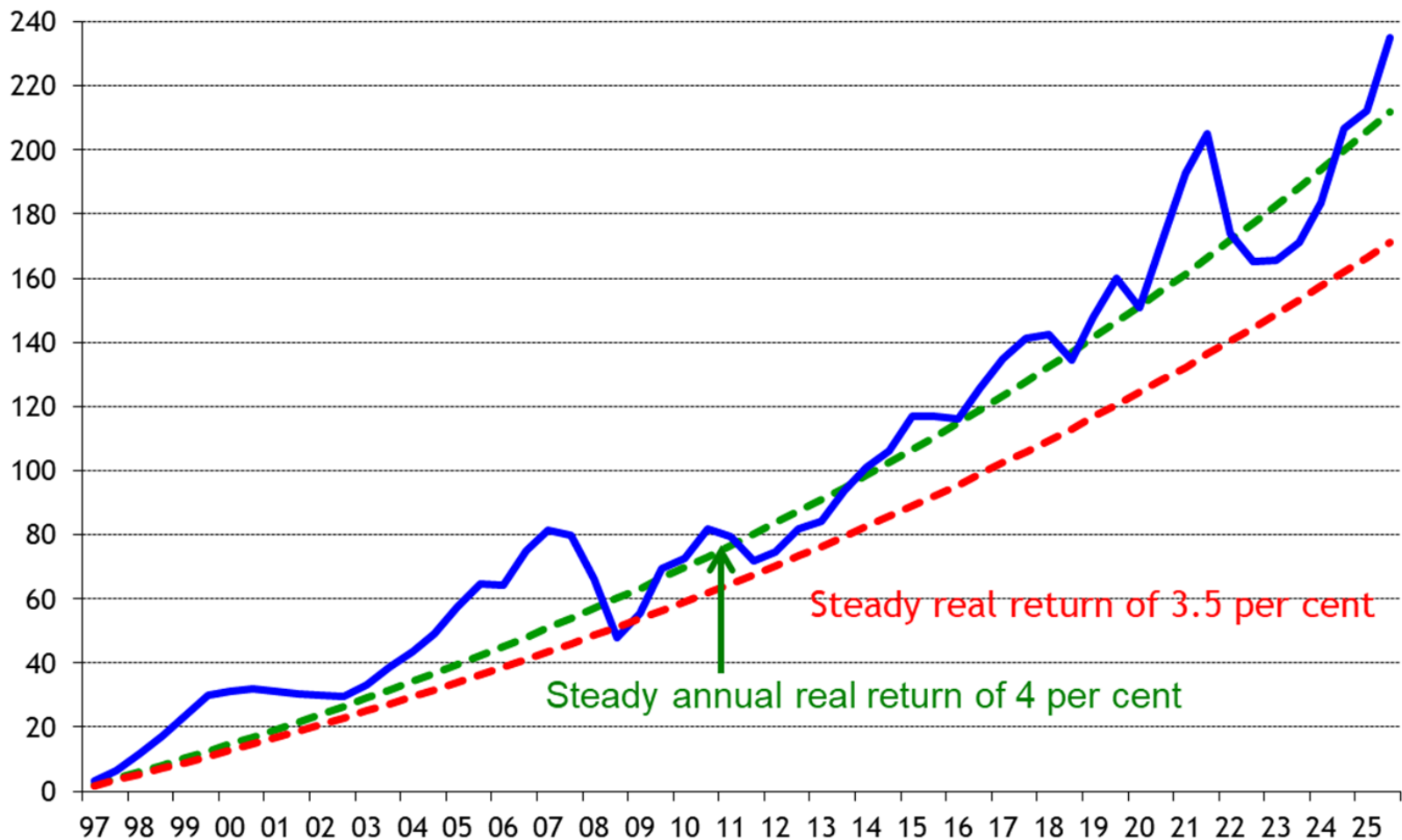
Nominal returns on investments by private-sector pension providers in 1997-2025, percentage of capital employed



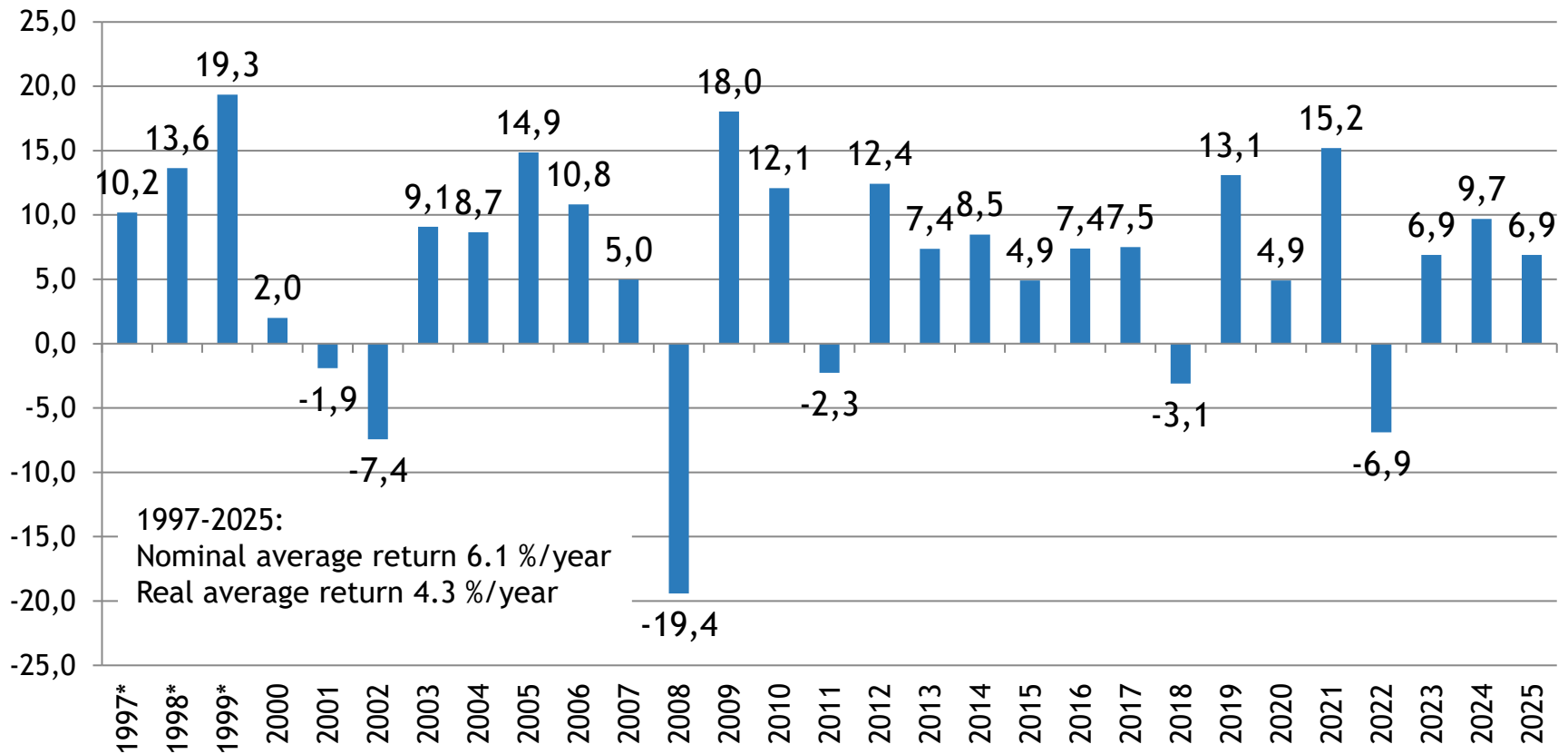
*1997 data only for companies

Annual returns are not capital-weighted in the calculation of the average return for the whole period.

Real return accumulated on investments by private-sector pension providers in 1997-2025, percentage of capital employed



Nominal returns on investments by public-sector pension providers in 1997-2025, percentage of capital employed



*1997-1999 data only for Keva

Annual returns are not capital-weighted in the calculation of the average return for the whole period.

Nominal returns on investments by private-sector and public-sector pension providers in 1997-2025, percentage of capital employed

