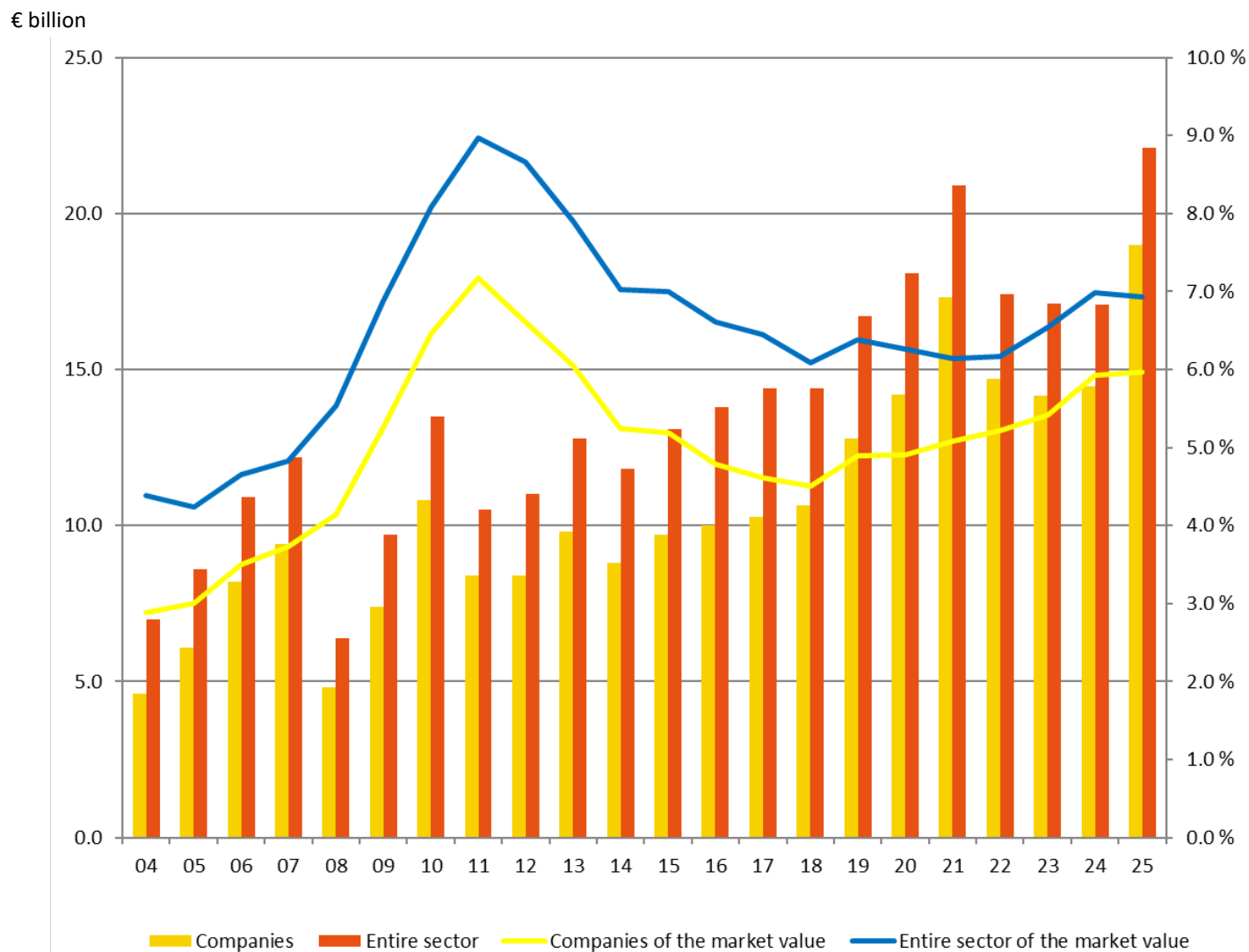
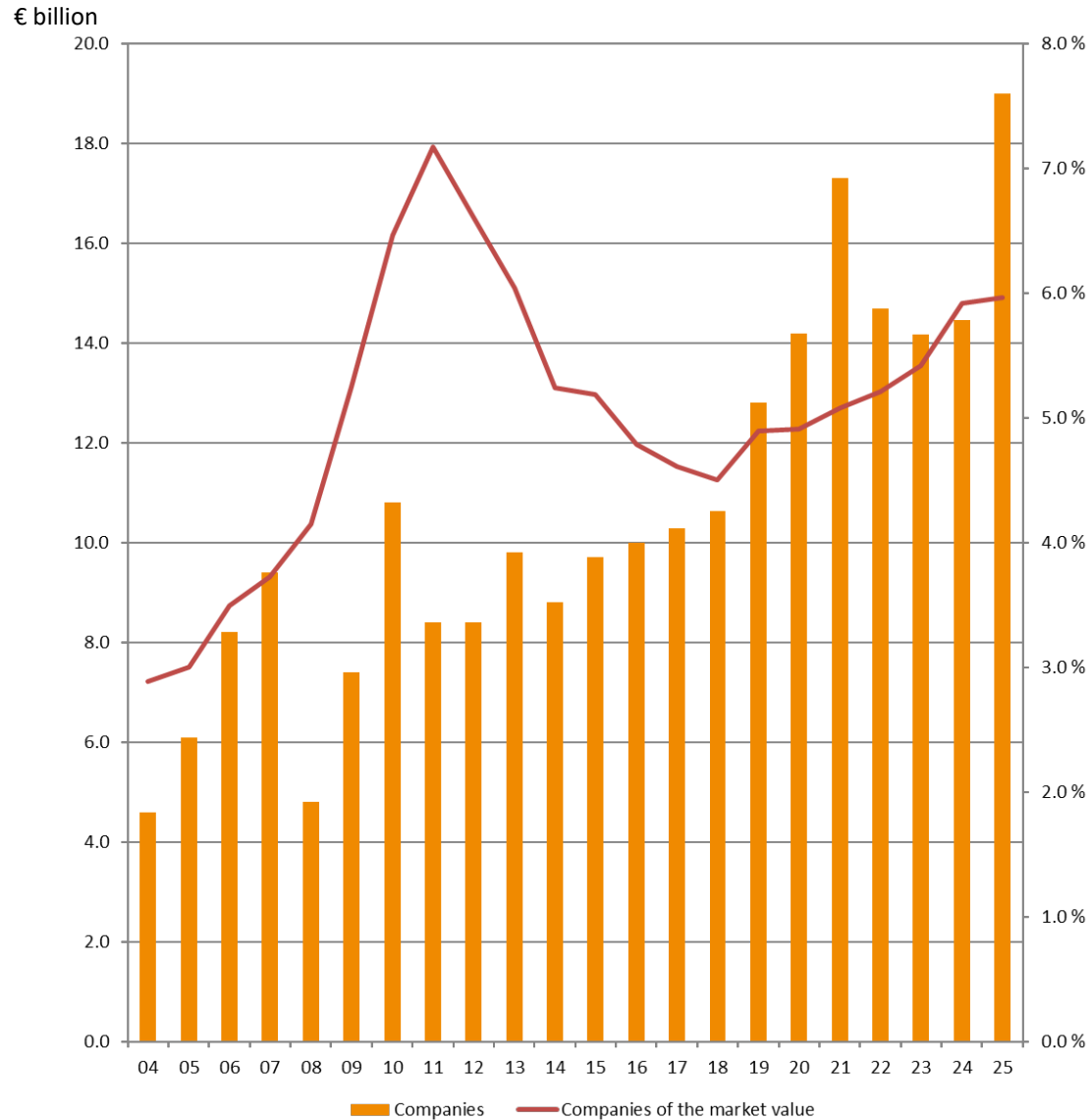


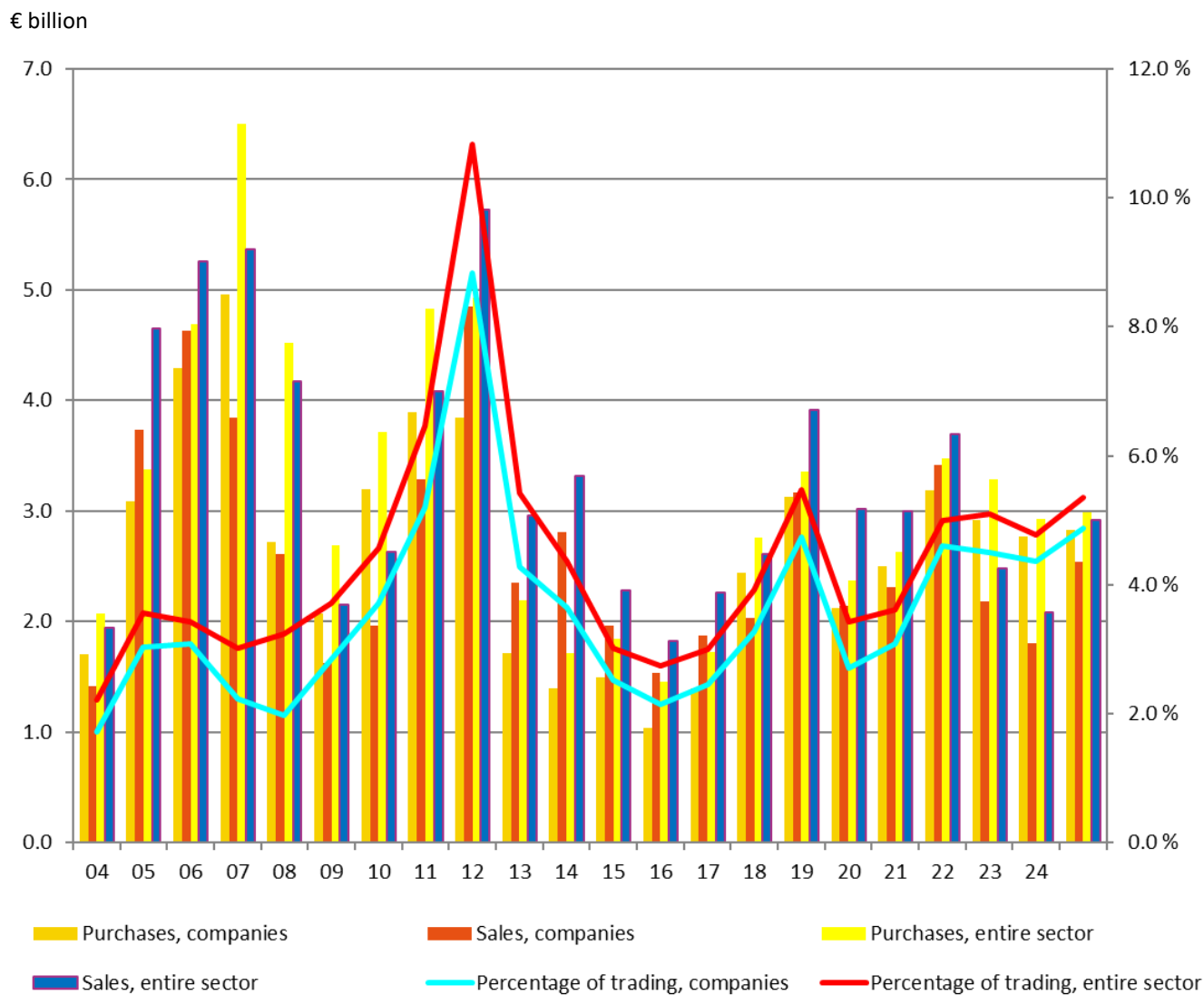
Finnish quoted shares owned by the entire earnings-related pension sector and the pension insurance companies in 2004-2025, and their percentages of the market value of the Helsinki Stock Exchange, € billion /%



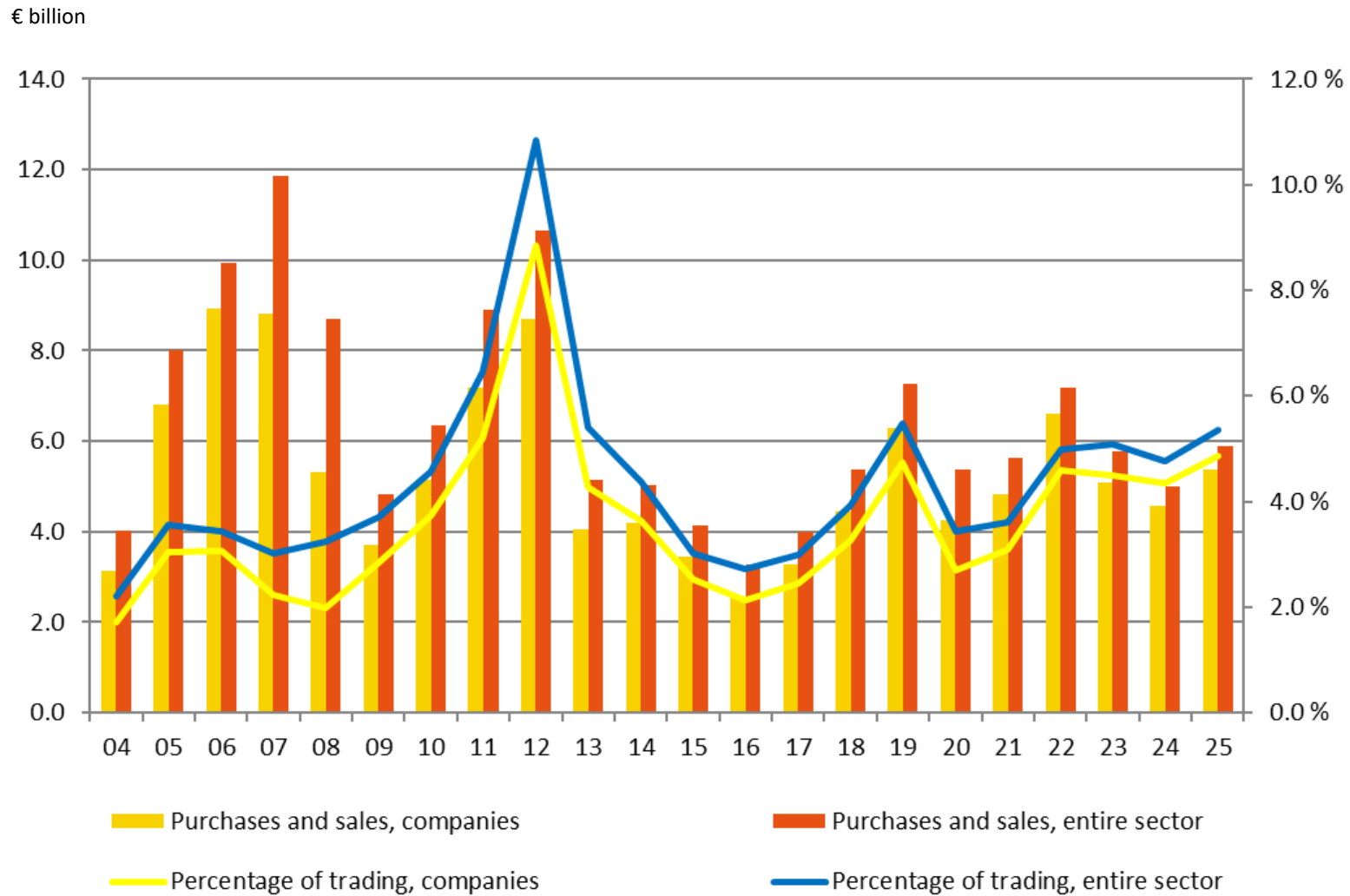
Finnish quoted shares owned by the pension insurance companies in 2004-2025, and their percentage of the market value of the Helsinki Stock Exchange, € billion/%



Purchases and sales of Finnish quoted shares by the entire earnings-related pension sector and the pension insurance companies in 2004-2025, and their percentages of trading on the stock exchange, € billion/%



Purchases and sales of Finnish quoted shares by the entire earnings-related pension sector and the pension insurance companies in 2004-2025, and their percentages of trading on the stock exchange, € billion/%



Finnish quoted shares owned by the entire earnings-related pension sector and the pension insurance companies, the market value of the stock exchange in 2004-2025, and the percentage of the shares vis-à-vis the market value of the stock exchange, € billion/%

Year	Companies	Entire sector	Market value of Helsinki Stock Exchange	Companies of the market value	Entire sector of the market value
2004	4.6	7.0	159.5	2.9 %	4.4 %
2005	6.1	8.6	203.1	3.0 %	4.2 %
2006	8.2	10.9	234.6	3.5 %	4.6 %
2007	9.4	12.2	252.5	3.7 %	4.8 %
2008	4.8	6.4	115.7	4.1 %	5.5 %
2009	7.4	9.7	140.9	5.3 %	6.9 %
2010	10.8	13.5	167.0	6.5 %	8.1 %
2011	8.4	10.5	117.1	7.2 %	9.0 %
2012	8.4	11.0	127.0	6.6 %	8.7 %
2013	9.8	12.8	162.2	6.0 %	7.9 %
2014	8,8	11.8	167.8	5.2 %	7.0 %
2015	9.7	13.1	187.0	5.2 %	7.0 %
2016	10.0	13.8	208.8	4.8 %	6.6 %
2017	10.3	14.4	223.1	4.6 %	6.5 %
2018	10.6	14.4	236.2	4.5 %	6.1 %
2019	12.8	16.7	261.6	4.9 %	6.4 %
2020	14.2	18.1	289.4	4.9 %	6.3 %
2021	17.4	21.3	340.4	5.1 %	6.3 %
2022	14.7	17.4	281.9	5.2 %	6.2 %
2023	14.2	17.5	261.6	5.4 %	6.5 %
2024	14.5	17.1	244.2	5.9 %	7.0 %
2025	19.0	22.1	318.4	6.0 %	6.9 %

Purchases and sales of Finnish quoted shares by the entire earnings-related pension sector and the pension insurance companies in 2004-2025, and their percentages of trading on the stock exchange, € billion/%

Year	Purchases, companies	Sales, companies	Purchases, entire sector	Sales, entire sector	Percentage of trading, companies	Percentage of trading, entire sector	Trading
2004	1.7	1.4	2.1	1.9	1.7 %	2.2 %	181.2
2005	3.1	3.7	3.4	4.6	3.0 %	3.6 %	225.0
2006	4.3	4.6	4.7	5.3	3.1 %	3.4 %	290.0
2007	5.0	3.8	6.5	5.4	2.2 %	3.0 %	394.5
2008	2.7	2.6	4.5	4.2	2.0 %	3.2 %	268.9
2009	2.1	1.6	2.7	2.1	2.8 %	3.7 %	130.2
2010	3.2	2.0	3.7	2.6	3.7 %	4.6 %	138.6
2011	3.9	3.3	4.8	4.1	5.2 %	6.5 %	137.9
2012	3.8	4.8	4.9	5.7	8.8 %	10.8 %	98.4
2013	1.7	2.4	2.2	3.0	4.3 %	5.4 %	95.1
2014	1.4	2.8	1.7	3.3	3.6 %	4.4 %	115.4
2015	1.5	2.0	1.8	2.3	2.5 %	3.0 %	137.0
2016	1.0	1.5	1.5	1.8	2.1 %	2.7 %	120.1
2017	1.4	1.9	3.0	2.6	2.5 %	3.0 %	133.2
2018	2.4	2.0	2.8	2.6	3.3 %	3.9 %	136.9
2019	3.1	3.2	3.4	3.9	4.7 %	5.5 %	132.9
2020	2.1	2.1	2.4	3.0	2.7 %	3.4 %	157.2
2021	2.5	2.3	2.6	3.0	3.1 %	3.6 %	156.0
2022	3.2	3.4	3.5	3.7	4.6 %	5.0 %	143.7
2023	2.9	2.2	3.3	2.5	4.5 %	5.1 %	113.2
2024	2.8	1.8	2.9	2.1	4,4 %	4.8 %	105.1
2025	2.8	2.5	3.0	2.9	4.9 %	5.4 %	110.2